

D

C

B

A

D

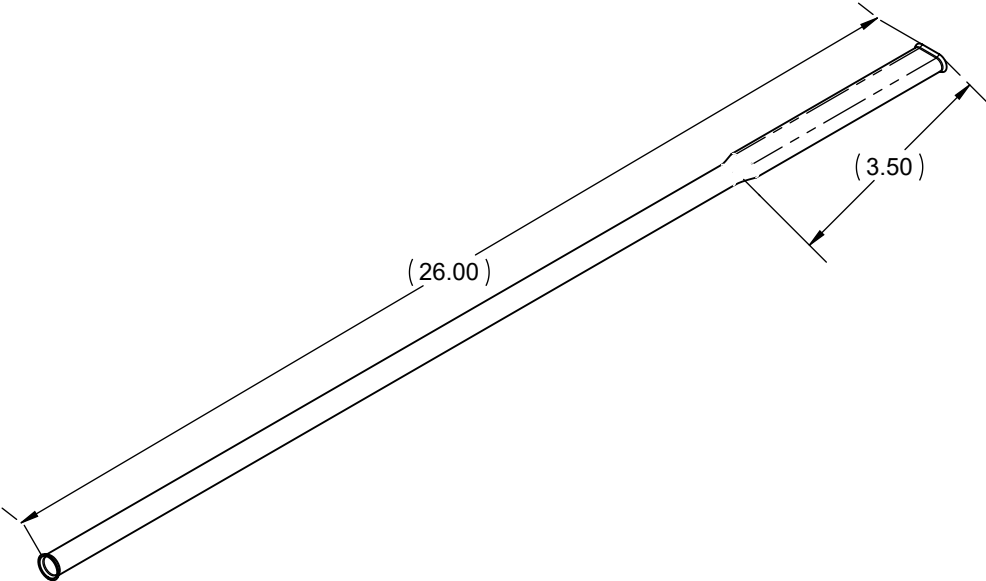
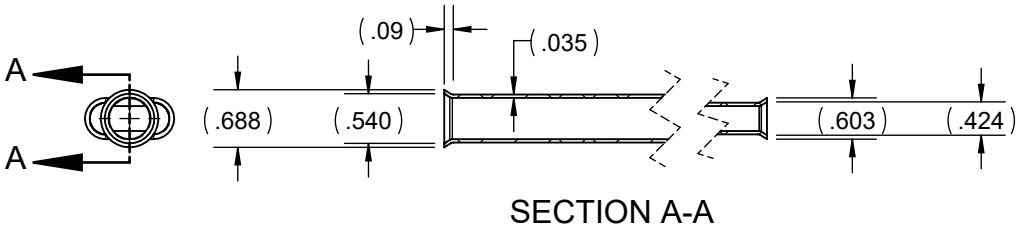
C

B

A

NOTES:

1. BREAK SHARP EDGES AND REMOVE ALL BURRS.
2. FINSH: APPLY CHEMICAL CONVERSION COATING PER MIL-DTL-5541 TYPE 1 CLASS 3 AND PRIMER PER MIL-PRF-23377 TYPE 1 CLASS OPTIONAL.
3. PART MARK OR BAG AND TAG WITH INDELIBLE INK, CONTRASTING COLOR, CAPITAL LETTERING
4. FLARE BOTH ENDS TO.6" AND FLATTEN TUBE AT ONE END TO .33"



WEIGHT: 0.14 LBS. NEXT ASSEMBLY: PA-200124-521

APPROVED	J KISTLER 10/1/20
CHECKED	B CHILDERS 09/28/20
DRAWN	M BAIG 09/28/20

REV.	DESCRIPTION	DRAWN	CHECKED	APPROVED
IR	INITAL RELEASE	-	-	-
A	UPDATED THE DIMENSIONS	M BAIG 10/7/20	L WILDING 10/7/20	J KISTLER 10/7/20

1	1	5052-O TUBE, .50 O.D X .035 WALL	5052-0 TUBE, .50 O.D. X .035 WALL COMPLIES WITH THE LATEST REVISION OF ASTM B209-10&07, ASME SB-209, QQ-A250/8&10 AND AMS4015 (O), 4016L (H32), AND 4017 (H34) STANDARDS WHERE APLLICABLE	
ITEM NO.	QTY	MATERIAL	MATERIAL DESCRIPTION	
<div>DIMENSIONS ARE IN INCHES UNLESS OTHERWISE NOTED THIRD ANGLE PROJECTION</div> <div></div> <div>TOLERANCES UNLESS OTHERWISE SPECIFIED: X = ± .100 .X = ± .050 .XX = ± .030 .XXX = ± .010 X° = ± 2° .X° = ± 1°</div>		<div>PROPRIETARY AND CONFIDENTIAL</div> <div>ALL THE INFORMATION CONTAINED IN THIS DRAWING IS PROPRIETARY TO PEREGRINE. ANY USE, DISCLOSURE OR REPRODUCTION OF THIS DATA IN PART OR WHOLE WITHOUT THE WRITTEN PERMISSION OF PEREGRINE IS PROHIBITED.</div>	<div>PEREGRINE 7385 SOUTH PEORIA STREET UNIT C4 ENGLEWOOD, CO 80112</div> <div>TITLE: ELECTRICAL WIRING CONDUIT</div> <div>DWG. NO. PA-200124-307 REV. A</div>	
			DWG SIZE: B	SCALE: 1:2
		SHEET 1 OF 1		