

D

C

B

A

D

C

B

A

NOTES:

1. INSTALLATION INSTRUCTIONS:
- a.

GAIN ACCESS TO ACTUATORS BY REMOVING THE APPROPRIATE PANELS. REFERENCE G150 MAINTENANCE MANUAL.
- b.

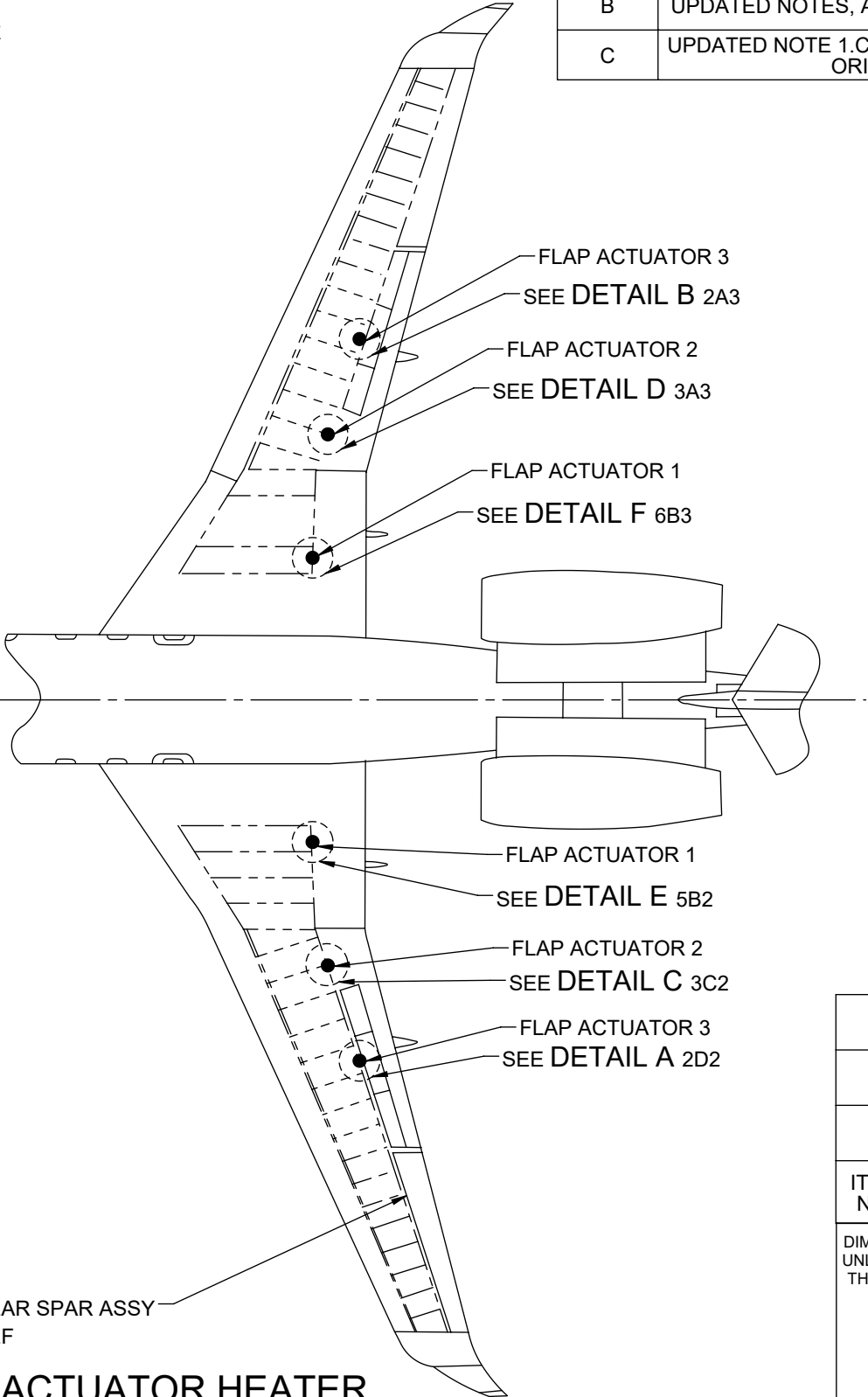
PREPARE THE ACTUATOR SURFACE WHERE THE HEATER WILL BE MOUNTED. THE SURFACE SHOULD BE CLEAN AND SMOOTH AND FREE FROM SHARP EDGES, PROTRUSIONS, LUBRICANTS, AND SEALANTS. THE HEATERS MAY BE INSTALLED ON PAINTED SURFACE.
- c.

INSTALL THE HEATERS AND TORQUE 6-32 SELF-LOCKING NUTS TO 9 +/-2 IN. LBS. ENSURE CLAMP GAP IS MINIMIZED AND HEATER IS SECURED TO ACTUATOR WITH NO MOVEMENT.ORIENTATION OF HEATER AND HARNESS MAYBE ADJUSTED ON ACTUATOR FOR AVAILABLE CLEARANCE, SECURE WITH SINGLE-STRAND, DOUBLE WRAP 0.025 SAFETY WIRE BETWEEN CLAMP HALVES.
- d.

OPERATE FLAPS/SLATS THROUGH SEVERAL CYCLES. ENSURE NO ACTUATOR BINDING IS NOTED WHILE THE SLATS ARE IN MOTION. ENSURE THE HEATERS DO NOT RESTRICT ACTUATOR MOVEMENT. PERFORM A VISUAL INSPECTION OF THE HEATER WIRING AND CONFIRM THAT NO CHAFING OR RUBBING IS OBSERVED.

FLAP ACTUATOR HEATER CLAMP LOCATIONS

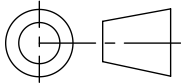
REAR SPAR ASSY
REF



REV.	DESCRIPTION	DRAWN	CHECKED	APPROVED
IR	INITAL RELEASE	-	-	-
A	CHANGED FLAG NOTE 5.	M BAIG 08/26/20	D SAM 08/26/20	D RANKIN 08/26/20
B	UPDATED NOTES, ACTUATOR PART NUMBERS	M BAIG 9/18/20	L WILDING 9/30/20	J KISTLER 10/1/20
C	UPDATED NOTE 1.C AND CHANGED ACTUATOR ORIENTATIONS	M BAIG 10/8/20	L WILDING 10/8/20	J KISTLER 10/8/20

3	2	PA-200124-827	CLAMP HEATER (F2)	COX & COMPANY
2	2	PA-200124-817	CLAMP HEATER (F1)	COX & COMPANY
1	2	PA-200124-807	CLAMP HEATER (F3)	COX & COMPANY
ITEM NO.	QTY	PART NUMBER	DESCRIPTION	VENDOR

DIMENSIONS ARE IN INCHES
UNLESS OTHERWISE NOTED
THIRD ANGLE PROJECTION



TOLERANCES UNLESS OTHERWISE SPECIFIED:
X = ± .100 .X = ± .050
.XX = ± .030 .XXX = ± .010
X° = ± 2° .X° = ± 1°

PROPRIETARY AND
CONFIDENTIAL

ALL THE INFORMATION
CONTAINED IN THIS
DRAWING IS
PROPRIETARY TO
PEREGRINE. ANY USE,
DISCLOSURE OR
REPRODUCTION OF
THIS DATA IN PART OR
WHOLE WITHOUT THE
WRITTEN PERMISSION
OF PEREGRINE IS
PROHIBITED.



PEREGRINE
7385 SOUTH PEORIA STREET
UNIT C4
ENGLEWOOD, CO 80112

TITLE: **FLAP ACTUATOR
HEATERS INSTL**

DWG. NO. **PA-200124-505**

REV. **C**

DWG SIZE: B SCALE: 1:1 SHEET 1 OF 6

APPROVED	J KISTLER 05/08/20
CHECKED	M BAIG 05/08/20
DRAWN	B CHILDERS 05/08/20

4

3

2

1

D

C

B

A

OUTBD

G 4C2

PA-200124-817 CLAMP HEATER ASSY

REAR SPAR ASSY
REF

G

FLAP ACTUATOR 3

DETAIL A 1B3
LKG FWD. NORMAL TO REAR SPAR ON THE LS ACFT
STRUCTURE OMITTED FOR CLARITYREAR SPAR ASSY
REF

PA-200124-817 CLAMP HEATER ASSY

G 4C2

OUTBD

G

FLAP ACTUATOR 3

DETAIL B 1D3
LKG FWD. NORMAL TO REAR SPAR ON THE RS ACFT
STRUCTURE OMITTED FOR CLARITYPROPRIETARY
AND
CONFIDENTIALALL THE INFORMATION
CONTAINED IN THIS
DRAWING IS
PROPRIETARY TO
PEREGRINE. ANY USE,
DISCLOSURE OR
REPRODUCTION OF
THIS DATA IN PART OR
WHOLE WITHOUT THE
WRITTEN PERMISSION
OF PEREGRINE IS
PROHIBITED.PEREGRINE
7385 SOUTH PEORIA STREET
UNIT C4
ENGLEWOOD, CO 80112TITLE: **FLAP ACTUATOR
HEATERS INSTL**DWG. NO. **PA-200124-505**REV. **C**

DWG SIZE: B

SCALE: 1:1

SHEET 2 OF 6

4

3

2

1

4

3

2

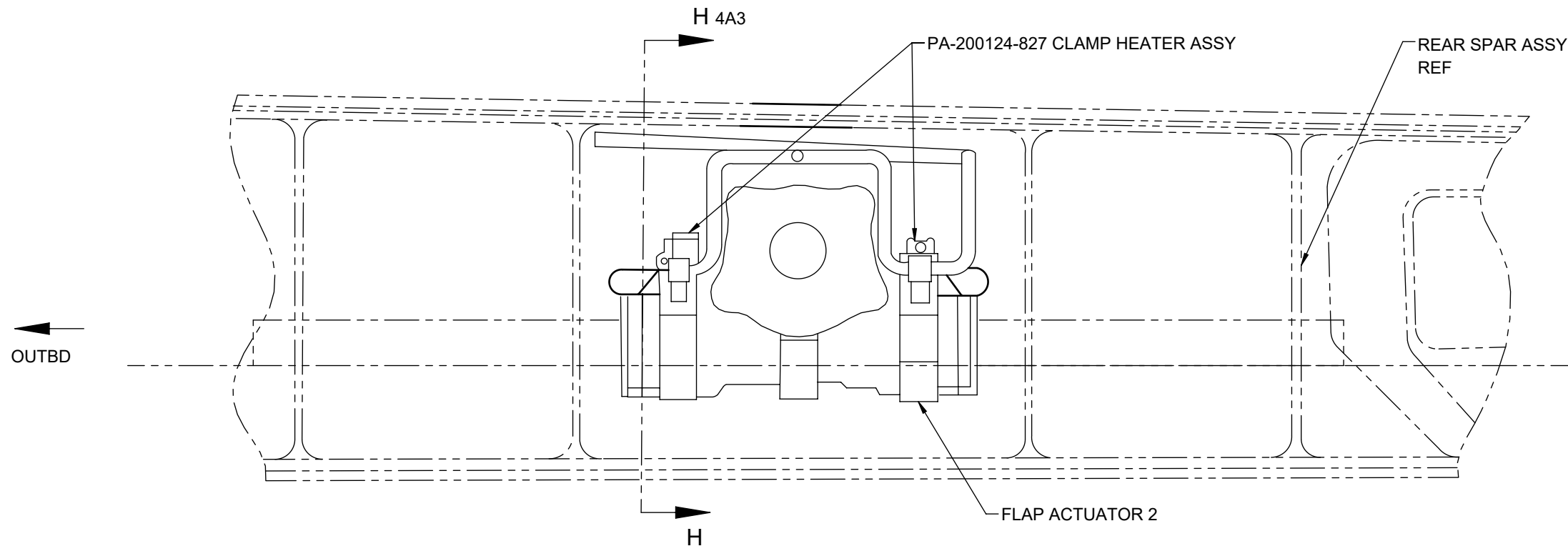
1

D

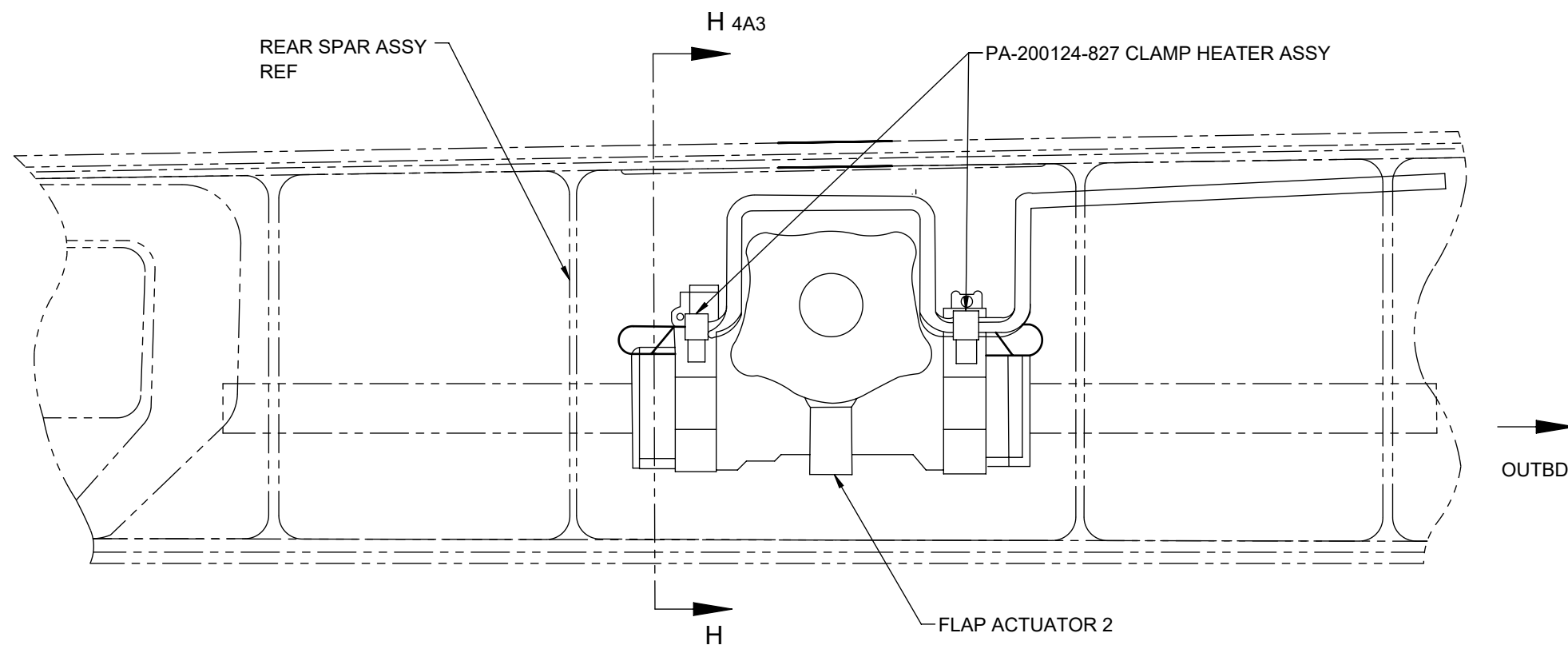
C

B


A



DETAIL C 1B3
LKG AFT. NORMAL TO REAR SPAR ON THE LS ACFT
STRUCTURE OMITTED FOR CLARITY



DETAIL D 1C3
LKG AFT. NORMAL TO REAR SPAR ON THE RS ACFT
STRUCTURE OMITTED FOR CLARITY

PROPRIETARY AND CONFIDENTIAL ALL THE INFORMATION CONTAINED IN THIS DRAWING IS PROPRIETARY TO PEREGRINE. ANY USE, DISCLOSURE OR REPRODUCTION OF THIS DATA IN PART OR WHOLE WITHOUT THE WRITTEN PERMISSION OF PEREGRINE IS PROHIBITED.	 PEREGRINE 7385 SOUTH PEORIA STREET UNIT C4 ENGLEWOOD, CO 80112		
	TITLE: FLAP ACTUATOR HEATERS INSTL		
	DWG. NO. PA-200124-505	REV. C	
	DWG SIZE: B	SCALE: 1:1	SHEET 3 OF 6

4

3

2

1

4

3

2

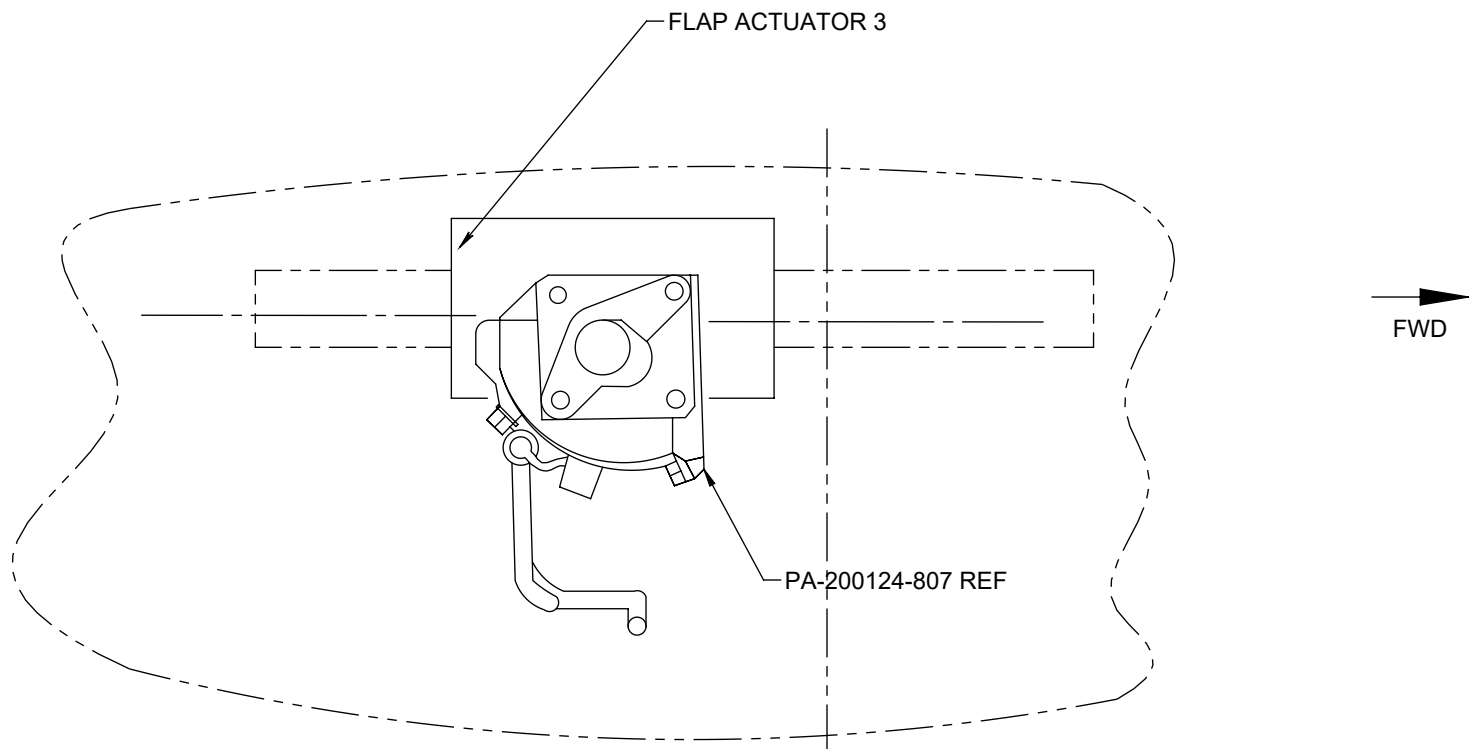
1

D

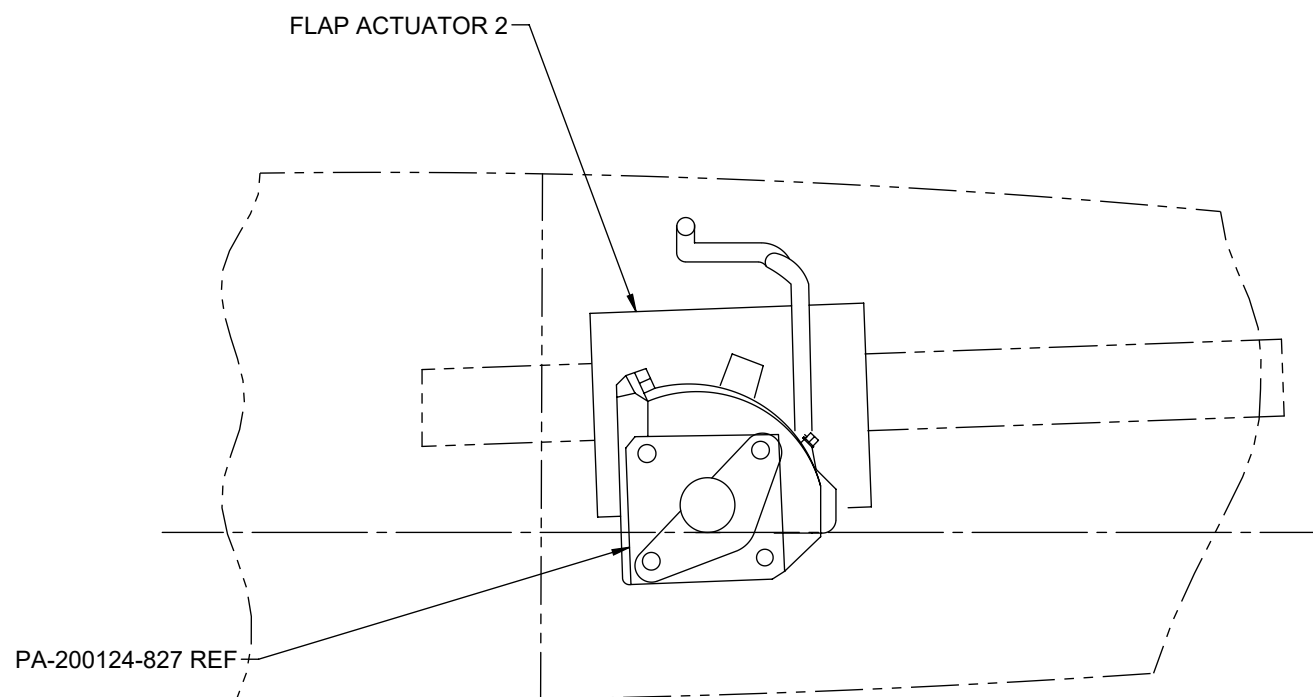
C

B


A



SECTION G-G 2D2, 2B3
LKG OUTBD ON LS
LKG INBD ON RS ACFT
STRUCTURE OMITTED FOR CLARITY



SECTION H-H 3D2, 3B3
LKG OUTBD ON LS ACFT
LKG INBD ON RS ACFT
STRUCTURE OMITTED FOR CLARITY

PROPRIETARY AND CONFIDENTIAL ALL THE INFORMATION CONTAINED IN THIS DRAWING IS PROPRIETARY TO PEREGRINE. ANY USE, DISCLOSURE OR REPRODUCTION OF THIS DATA IN PART OR WHOLE WITHOUT THE WRITTEN PERMISSION OF PEREGRINE IS PROHIBITED.	 PEREGRINE 7385 SOUTH PEORIA STREET UNIT C4 ENGLEWOOD, CO 80112		
	TITLE: FLAP ACTUATOR HEATERS INSTL		
	DWG. NO.	PA-200124-505	REV. C
	DWG SIZE: B	SCALE: 1:1	SHEET 4 OF 6

4

3

2

1

4

3

2

1

D

C

B

A

OUTBD

PA-200124-807 CLAMP HEATER ASSY

REAR SPAR ASSY
REF

FLAP ACTUATOR 1

J

J

DETAIL E 1B3

LKG FWD. NORMAL TO REAR BEAM ON THE LS ACFT
STRUCTURE OMITTED FOR CLARITY

FLAP ACTUATOR 1

PA-200124-807 REF

FWD

SECTION J-J 6D3
LKG OUTBD ON LS ACFT
LKG INBD ON RS ACFT
STRUCTURE OMITTED FOR CLARITYPROPRIETARY
AND
CONFIDENTIALALL THE INFORMATION
CONTAINED IN THIS
DRAWING IS
PROPRIETARY TO
PEREGRINE. ANY USE,
DISCLOSURE OR
REPRODUCTION OF
THIS DATA IN PART OR
WHOLE WITHOUT THE
WRITTEN PERMISSION
OF PEREGRINE IS
PROHIBITED.PEREGRINE
7385 SOUTH PEORIA STREET
UNIT C4
ENGLEWOOD, CO 80112

TITLE:

FLAP ACTUATOR
HEATERS INSTL

DWG. NO. PA-200124-505

REV. C

DWG SIZE: B

SCALE: 1:1

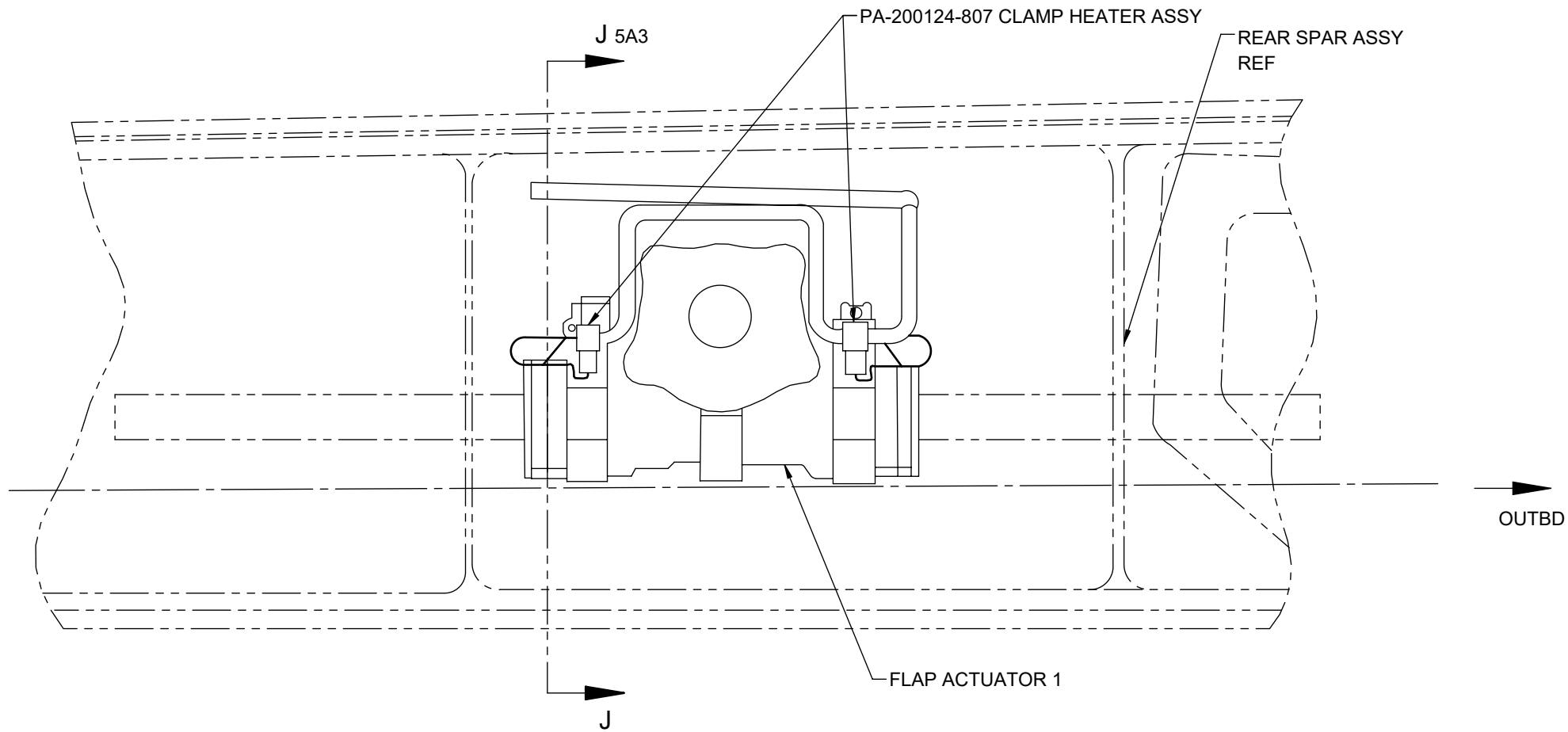
SHEET 5 OF 6

4


3

2

1



DETAIL F 1C3
LKG AFT. NORMAL TO REAR SPAR ON THE RS ACFT
STRUCTURE OMITTED FOR CLARITY

PROPRIETARY AND CONFIDENTIAL ALL THE INFORMATION CONTAINED IN THIS DRAWING IS PROPRIETARY TO PEREGRINE. ANY USE, DISCLOSURE OR REPRODUCTION OF THIS DATA IN PART OR WHOLE WITHOUT THE WRITTEN PERMISSION OF PEREGRINE IS PROHIBITED.	 PEREGRINE 7385 SOUTH PEORIA STREET UNIT C4 ENGLEWOOD, CO 80112		
	TITLE: FLAP ACTUATOR HEATERS INSTL		
	DWG. NO. PA-200124-505		REV. C
	DWG SIZE: B	SCALE: 1:1	SHEET 6 OF 6